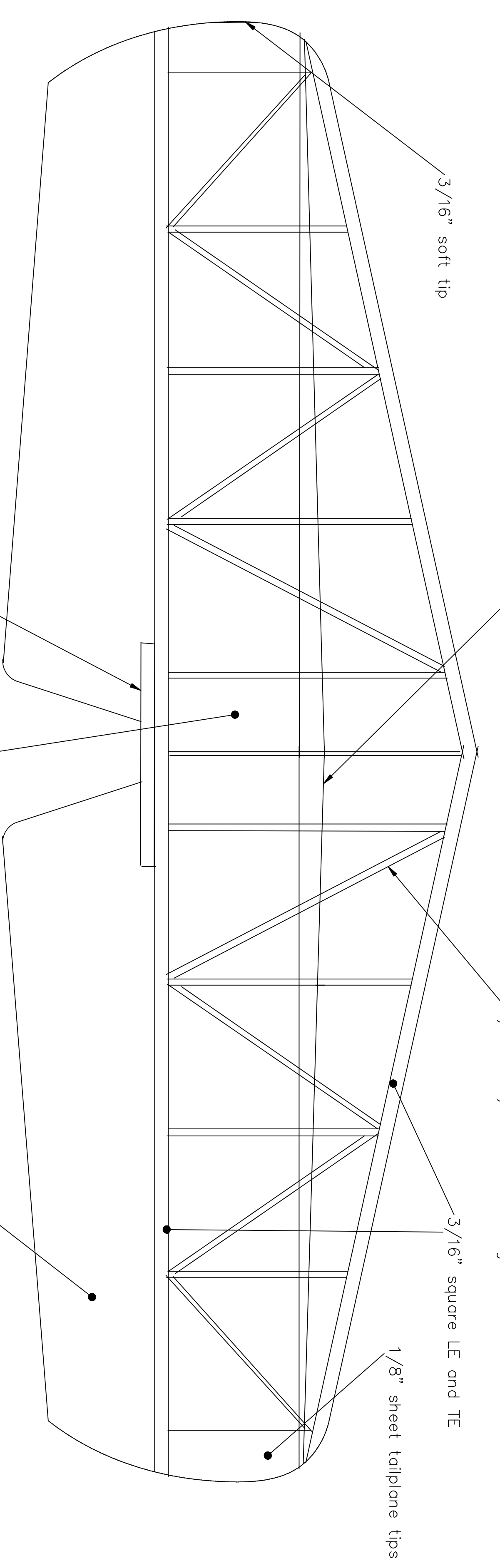


Cutout to suit silencer
Fall behind F1 with 1/2"
sheet and curve to suit

1/4" x 1/16" tapering to 1/16" x 1/16" hard balsa spar top and bottom
Inlay into the ribs.
Cut spar, then lay over ribs, mark the front
and rear of the spar at each point then carefully
cut the ribs in situ



1/16" light sheet infill top and bottom

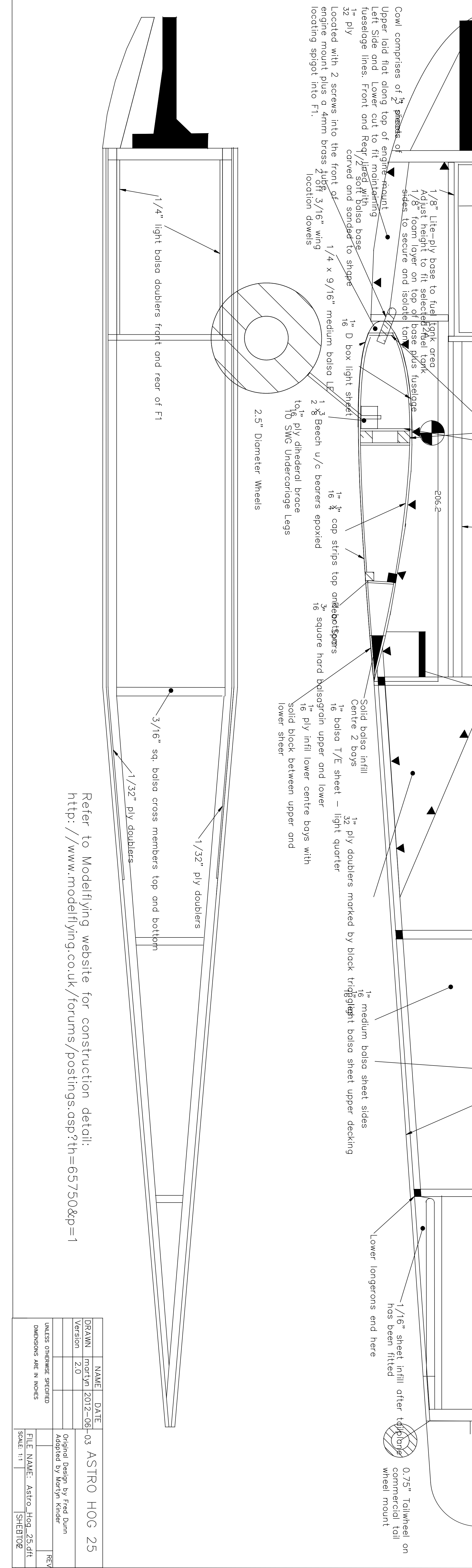
1/8" ply support for M5 captive 'T' Nut
for single nylon wing mounting bolt
3/16 sheet hard balsa support between
inlay into the elevators before they are separated

3/16" sq balsa uprights and cross members
Note: Upper cross members are bonded to F5-7
and offset slightly

2 laminations sheet fin and
rudder and elevators - light balsa
Mylar hinges sandwiched between
laminations

Complete the model except for the cowl.
Locate engine to get the CoG correct.
Adjust mount length so that front of
mount is just behind prop driver then
build cowling to fit.
Use 43mm spinner (not shown)

SLEEC SL803-R Long engine
SC25 side mounted. Leng
engine is fitted.



1/8" Lite-ply base to fuel tank area
Adjust height to fit selected fuel tank
1/8" foam layer on top of base plus fuselage
sheets to secure and isolate tank

1" D box light sheet
1 3/8 Beech u/c bearers epoxied
to 10 SWC Undercarriage Legs

1" x 3/4" cap strips top and bottom
16 square hard balsa grain upper and lower
16 ply infill lower centre boys with
solid block between upper and
lower shear

1" x 3/4" cap strips top and bottom
16 square hard balsa grain upper and lower
16 ply infill lower centre boys with
solid block between upper and
lower shear

1" x 3/4" cap strips top and bottom
16 square hard balsa grain upper and lower
16 ply infill lower centre boys with
solid block between upper and
lower shear

1" x 3/4" cap strips top and bottom
16 square hard balsa grain upper and lower
16 ply infill lower centre boys with
solid block between upper and
lower shear

1" x 3/4" cap strips top and bottom
16 square hard balsa grain upper and lower
16 ply infill lower centre boys with
solid block between upper and
lower shear

Refer to Modelflying website for construction detail:
<http://www.modelflying.co.uk/forums/postings.asp?th=65750&p=1>

NAME	DATE	ASTRO HOG 25
DRAWN	martyn 2012-06	
Version	2.0	
UNLESS OTHERWISE SPECIFIED DIMENSIONS ARE IN INCHES		
FILE NAME:	Astro_Hog_25.dft	
SCALE:	1:1	
SHEET	2	